

BEFARD



**MINI CRANE
ON A CRAWLER CHASSIS**

TB10002

PICK & CARRY

25/06/2025

MINI PICK & CARRY CRANE

ONE DEVICE, MULTIPLE USES

The Befard TB10002 mini crane is a versatile and compact Pick & Carry device designed for maximum efficiency on the construction site. With its ability to travel while carrying a load, the TB10002 enables unloading, precise positioning, and safe installation of components — all with a single machine.

Its compact dimensions allow it to pass through standard doorways, while the hydraulically extendable counterweight ensures optimal weight distribution during operation without compromising mobility or safety. Its exceptional stability while moving with a load makes it an ideal alternative to many larger, less maneuverable machines.

The TB10002 is equipped with an advanced electronic system that allows the operator to continuously monitor working ranges and outrigger positions directly from the remote control, significantly enhancing operational precision and safety. Additionally, the endless rotation of the boom column around its axis provides full freedom of movement, even in the most spatially restricted environments.

The Befard TB10002 can be easily equipped with additional accessories, making it a flexible solution for a wide range of applications — from window and glass installation to assembly work in industrial halls.



25/06/2025

TB10002

BEFARD.COM

ENGINEERED FOR EFFICIENCY BUILT TO MOVE.

- Maximum lifting capacity: 6,000 kg
- Pick & Carry (travel with load): up to 1,800 kg
- Reach: up to approx. 23.5 m (with optional equipment)
- Hydraulic winch: 990 kg lifting capacity
- Hydraulic JIB arm with two telescopic extensions
- Endless 360° rotation of the boom column
- Width: only 0.79 m (fits through standard doorways)
- Extendable crawler chassis for enhanced stability while maintaining compact dimensions
- Radio remote control with real-time visualization of working range and outrigger positioning
- Versatile applications across various construction site tasks
- Crane operation monitoring system
- 3-in-1 power system:

Diesel engine

Electric motor (230 V, 400 V or 110 V)

Li-ion battery pack



25/06/2025

TB10002

BEFARD.COM

EVERYTHING THAT MATTERS – STANDARD

BEFARD



RADIO REMOTE CONTROL

Operate driving and lifting functions remotely for maximum control and safety.



ELECTRONIC MONITORING SYSTEM

An intelligent sensor and control system that monitors machine operating parameters in real time, enhancing its precision, safety, and reliability. Additionally, the overload protection system safeguards the equipment from damage caused by excessive forces acting on the electronic components.



EXTENDABLE CHASSIS (79-109 CM)

The extendable crawler chassis enhances the machine's stability. The ability to narrow the track width allows it to pass through standard single doorways.



ROTATING COLUMN WITH INFINITE ROTATION

The crane column features infinite rotation around its own axis. This means there is no need to monitor how many turns the machine has completed, protecting the equipment from damage.

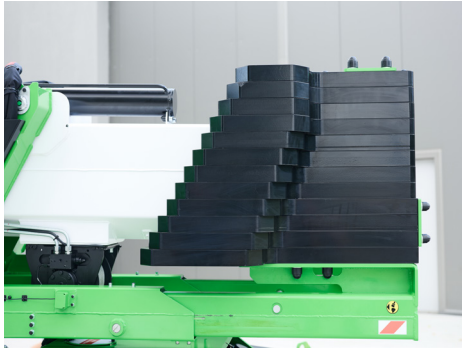
25/06/2025

TB10002

BEFARD.COM

EVERYTHING THAT MATTERS – STANDARD

BEFARD



HYDRAULICALLY EXTENDABLE COUNTERWEIGHT

The hydraulically extendable counterweight helps maintain compact dimensions during transport. When in use, the counterweight extends to the working position, allowing optimal distribution of the center of gravity.



NON-MARKING CRAWLER TRACKS

Non-marking tracks enable indoor operation without leaving black marks.



SEVERAL WORK AND TRAVEL MODES

The machine features multiple travel and operating modes, allowing the operator to control it according to personal preferences and specific requirements.



THE FASTEST LOADER IN THE 230V CATEGORY

The fast charger allows you to quickly recharge the device's battery and continue working without unnecessary delays.

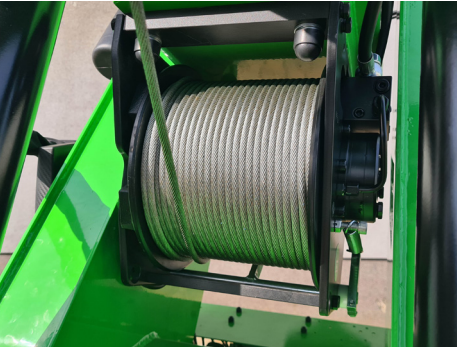
25/06/2025

TB10002

BEFARD.COM

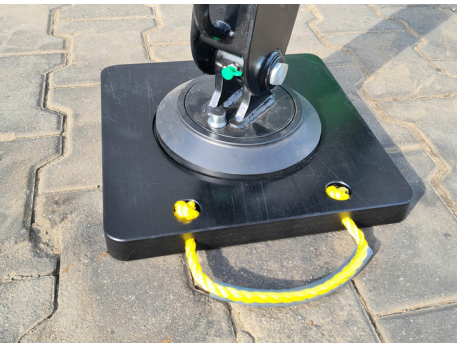
EVERYTHING THAT MATTERS – STANDARD

BEFARD



HYDRAULIC WINCH

The standard hydraulic winch, with a lifting capacity of up to 990 kg and a rope length of 60 m significantly enhances the machine's functionality.



OUTRIGGER FOOT PADS

Outrigger foot pads protect the working surface from damage and also stabilize the crane on unpaved or soft ground.



ADDITIONAL HOOK LOAD

The additional hook load of the winch significantly improves operational precision – the increased weight reduces sway, making hook maneuvering easier during operations.



LED WORK LIGHT

An additional LED work light powered directly from the machine increases comfort and safety, even during nighttime operations.

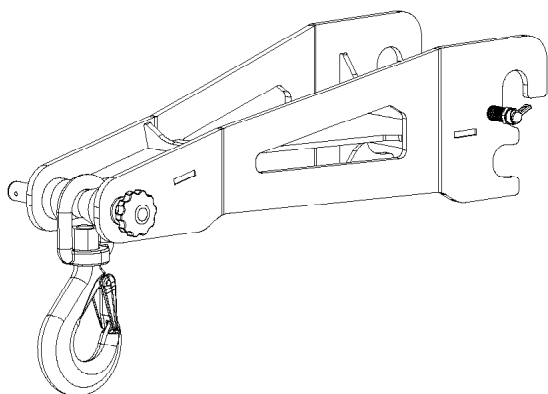
25/06/2025

TB10002

BEFARD.COM

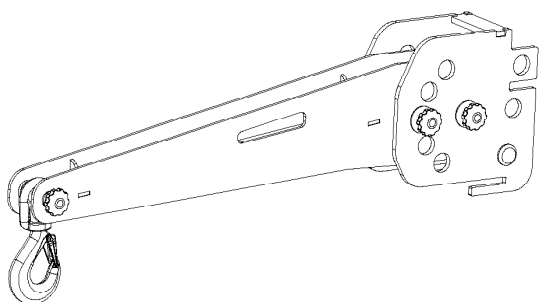
EVERYTHING THAT MATTERS – STANDARD

BEFARD



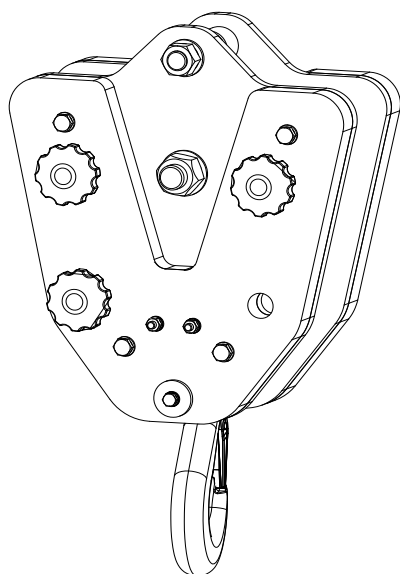
PICK & CARRY HOOK

The reach can be extended by approximately 0.5 m.
Operation is possible without the need to dismantle the JIB arm.



MAIN BOOM SEARCH HOOK

The reach can be extended by approximately 1 meter.
Dismantling the JIB arm is required.



HOOK BLOCK ON THE MAIN BOOM

It is used with the winch when the JIB arm is removed.

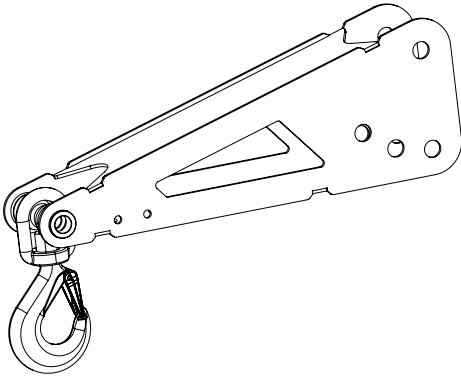
25/06/2025

TB10002

BEFARD.COM

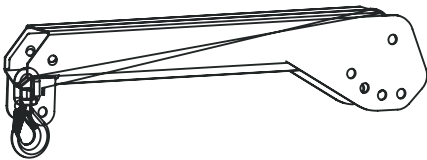
EVERYTHING THAT MATTERS – STANDARD

BEFARD



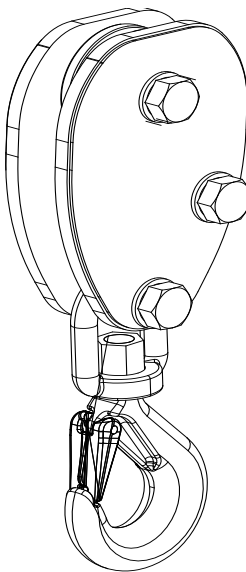
JIB SEARCH HOOK

The reach can be extended by approximately 0.5 m.
The hook is mounted on the JIB arm.



MANUAL JIB ARM

The reach can be extended by approximately 1 cm.
Mounted on the JIB arm.



HOOK BLOCK ON THE JIB ARM

It is used with the winch when the machine is equipped with a JIB.

25/06/2025

TB10002

BEFARD.COM

BEFARD TB10002

COMFORT AND ECOLOGY

BEFARD

BEFARD electric machines offer not only environmental benefits but also the highest level of work comfort. Eliminating the combustion engine minimizes noise and vibration.

This solution enables hassle-free operation of machines in European city centers where Low Emission Zone regulations apply (e.g., London, Paris, Berlin).

BUILT-IN 230V CHARGER AS STANDARD

CAPABILITY TO WORK ON CABLE POWER DURING BATTERY CHARGING

- Fully battery-powered (Li-ion)
- Bio-oil optionally available for the combustion engine version
- Optional fast charger 400V (faster Li-ion battery charging)



Zero
Emission




25/06/2025

TB10002

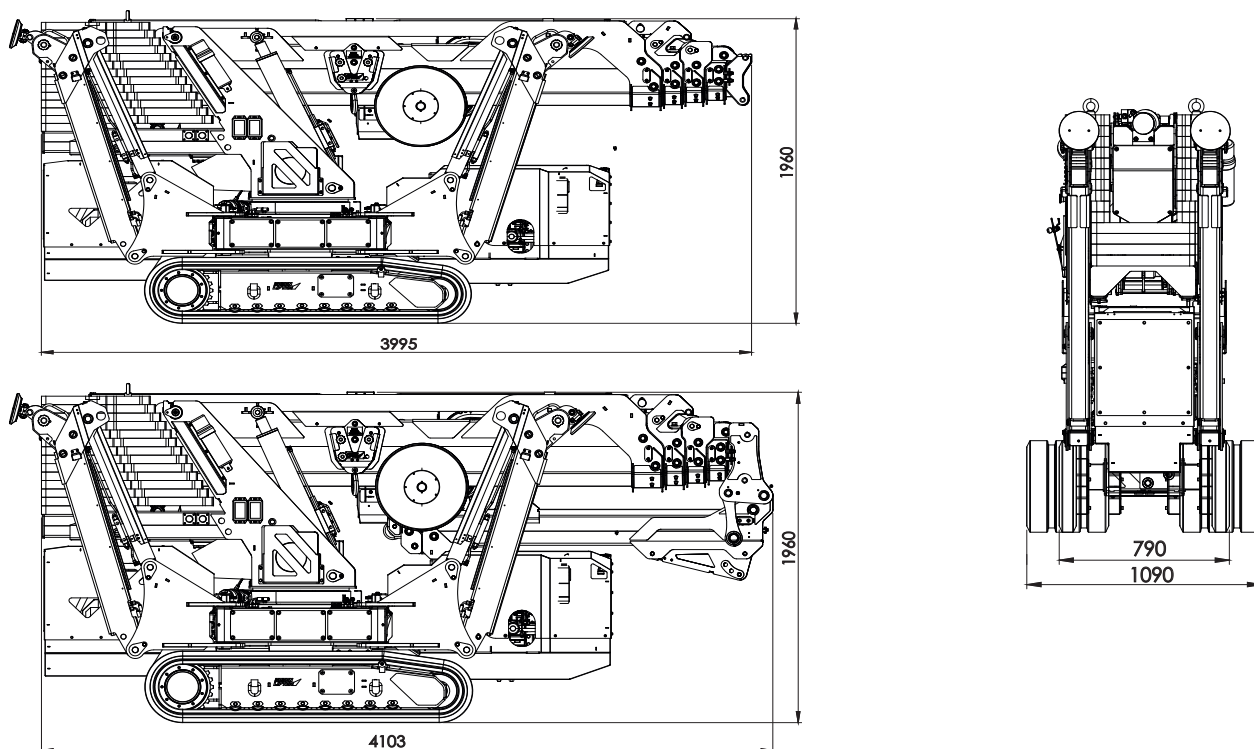
BEFARD.COM

TECHNICAL SPECIFICATIONS

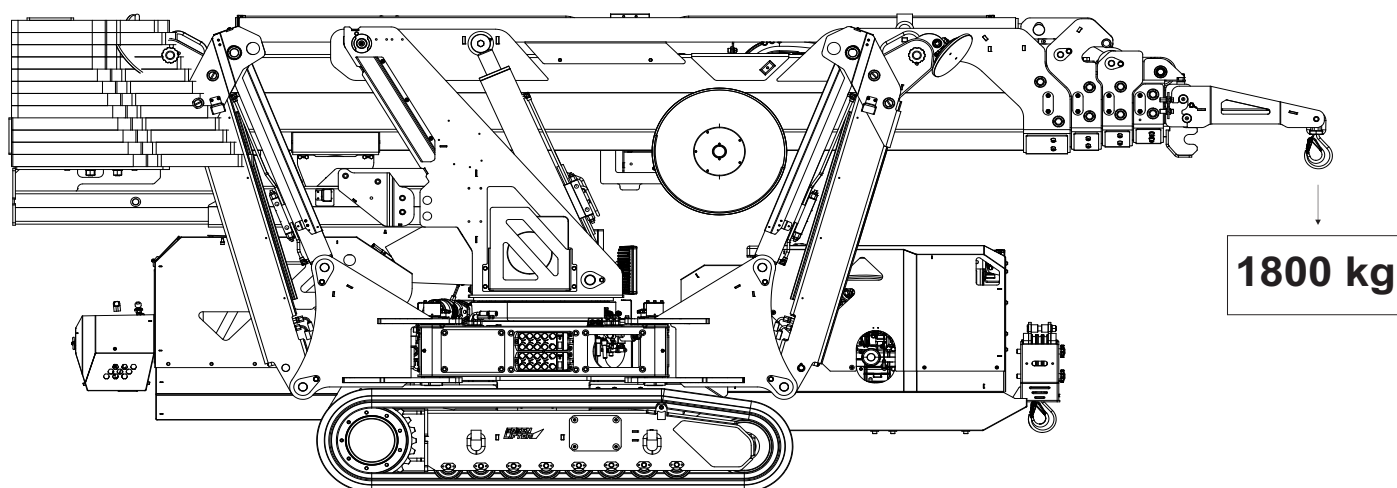


Maximum lifting capacity	6000 kg
Maximum pick and carry load capacity	1800 kg
Machine length for transport	4,1 m
Machine height for transport	1,96 m
Machine width for transport	0,79 m
Maximum vertical reach with hydraulic JIB and optional equipment	↕ 23,50 m
Maximum horizontal reach with hydraulic JIB and optional equipment	↔ 20,50 m
Maximum vertical reach with hydraulic JIB	↕ 22,00 m
Maximum horizontal reach with hydraulic JIB	↔ 19,00 m
Hydraulic winch lifting capacity	990 kg
Winch rope length	60 m
Remote radio control	work and travel
Masa urządzenia	4800 kg
Power source	3-in-1 power system: combustion engine (Diesel), electric (230V, 400V, or 110V), and Li-ion batteries.
Rotating column	unlimited rotation  INFINITY

TRANSPORT DIMENSIONS



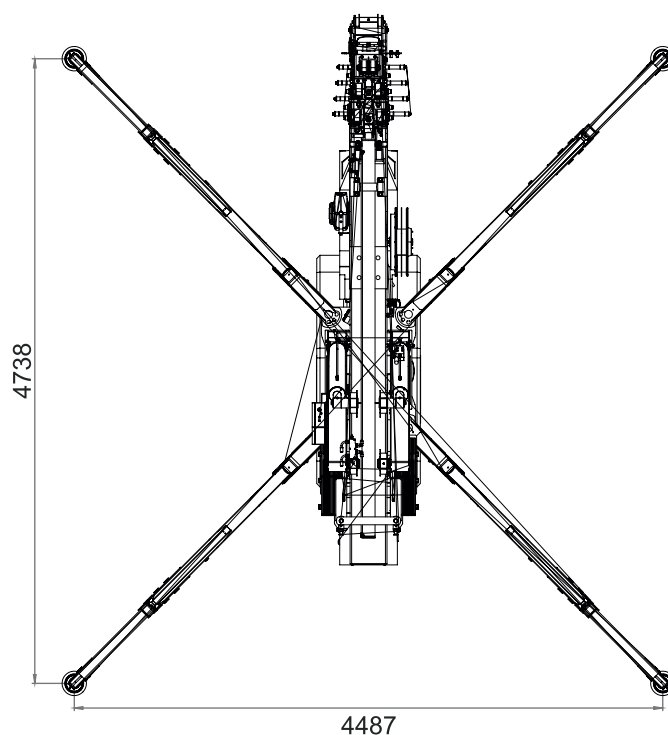
TB10002 PICK & CARRY LIFTING CAPACITY



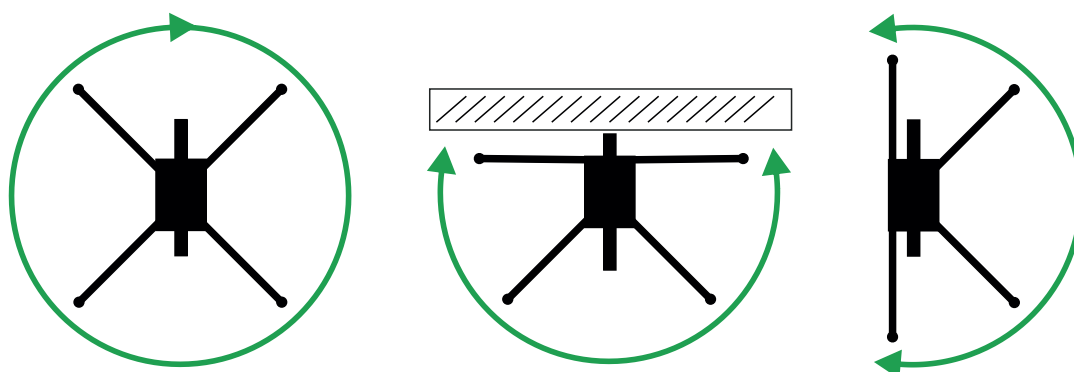
The machine's pick & carry capacity is 1800 kg without the JIB arm, and 1500 kg with the JIB installed.

25/06/2025

DIMENSIONS OF EXTENDED OUTRIGGERS

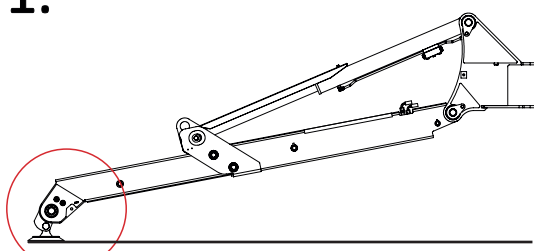


OPERATING RANGE OF OUTRIGGER FEET

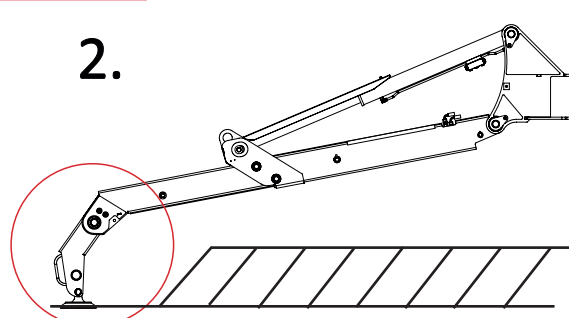


OUTRIGGER FOOT POSITIONS

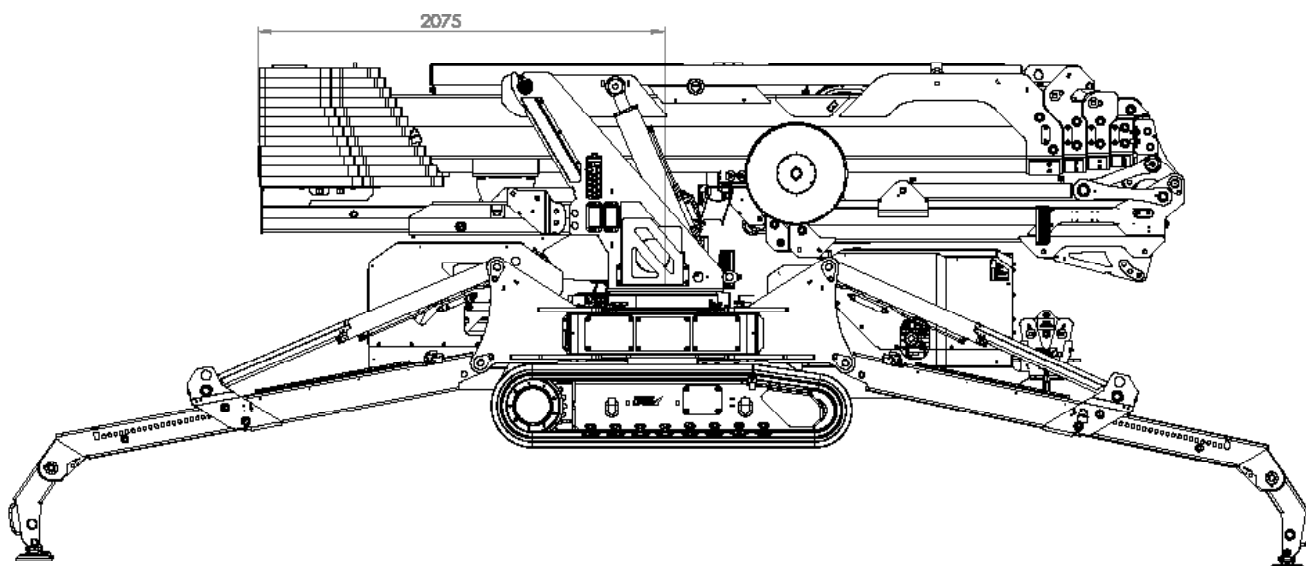
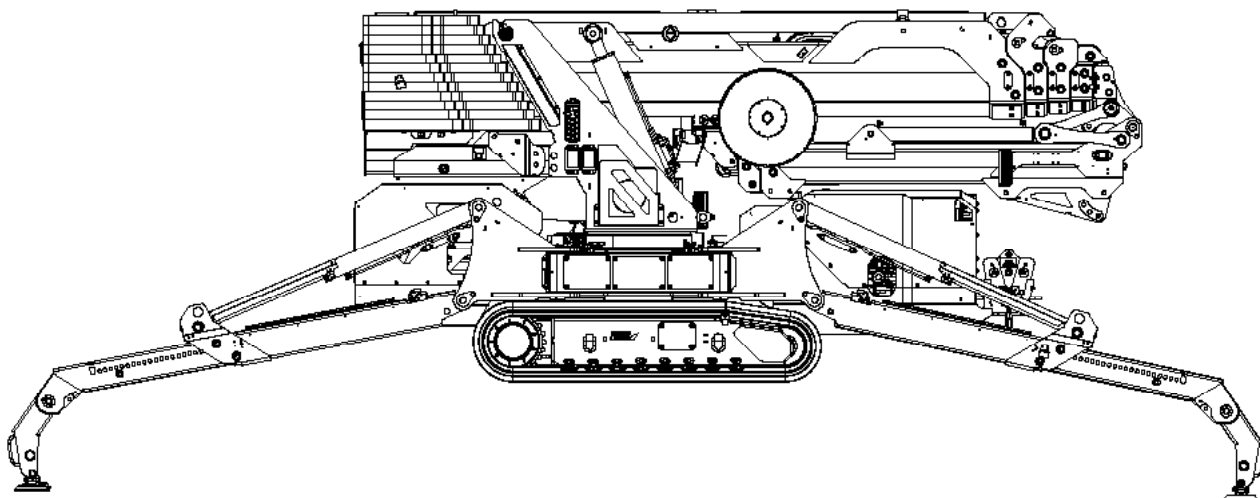
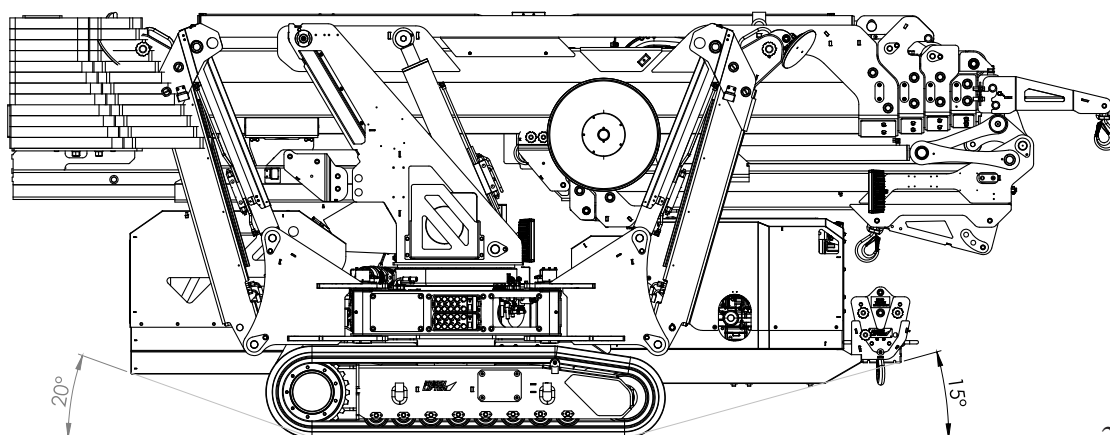
1.



2.

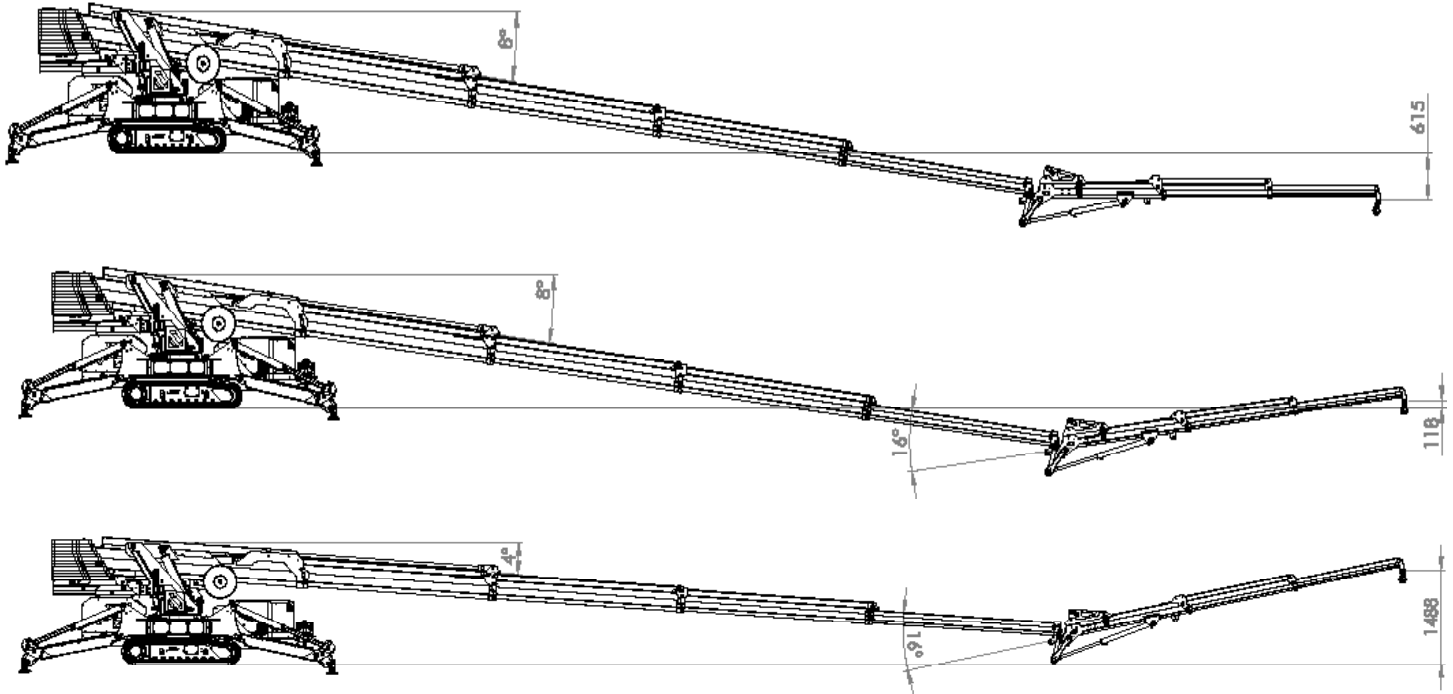
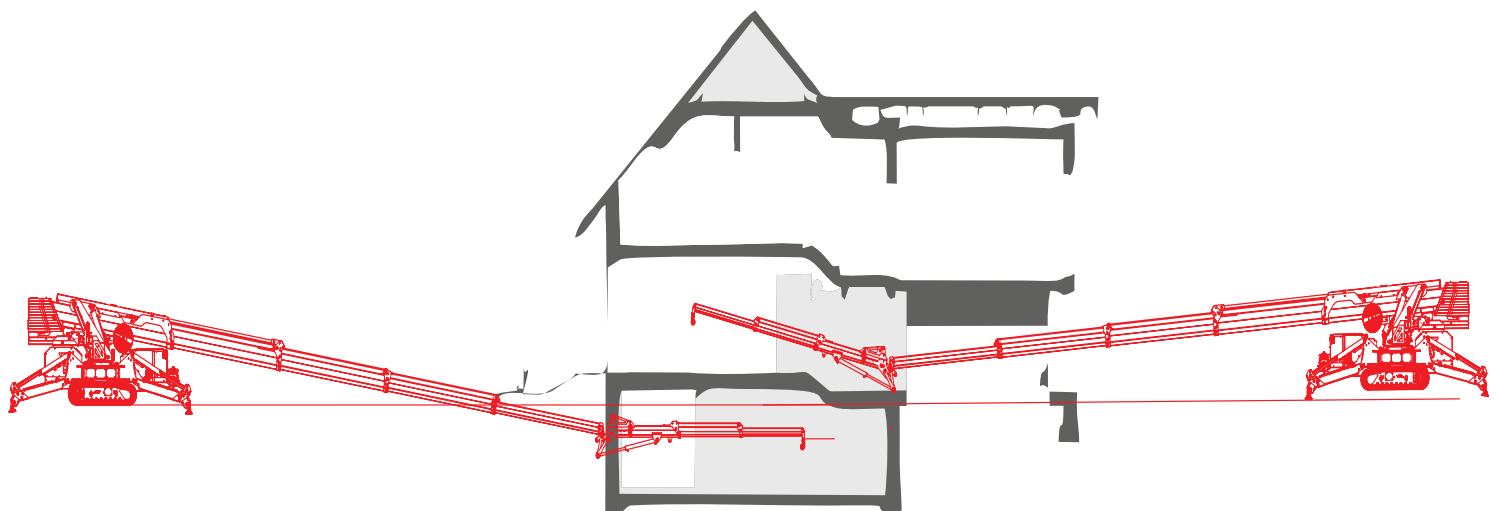


25/06/2025

HYDRAULIC COUNTERWEIGHT**APPROACH ANGLES**

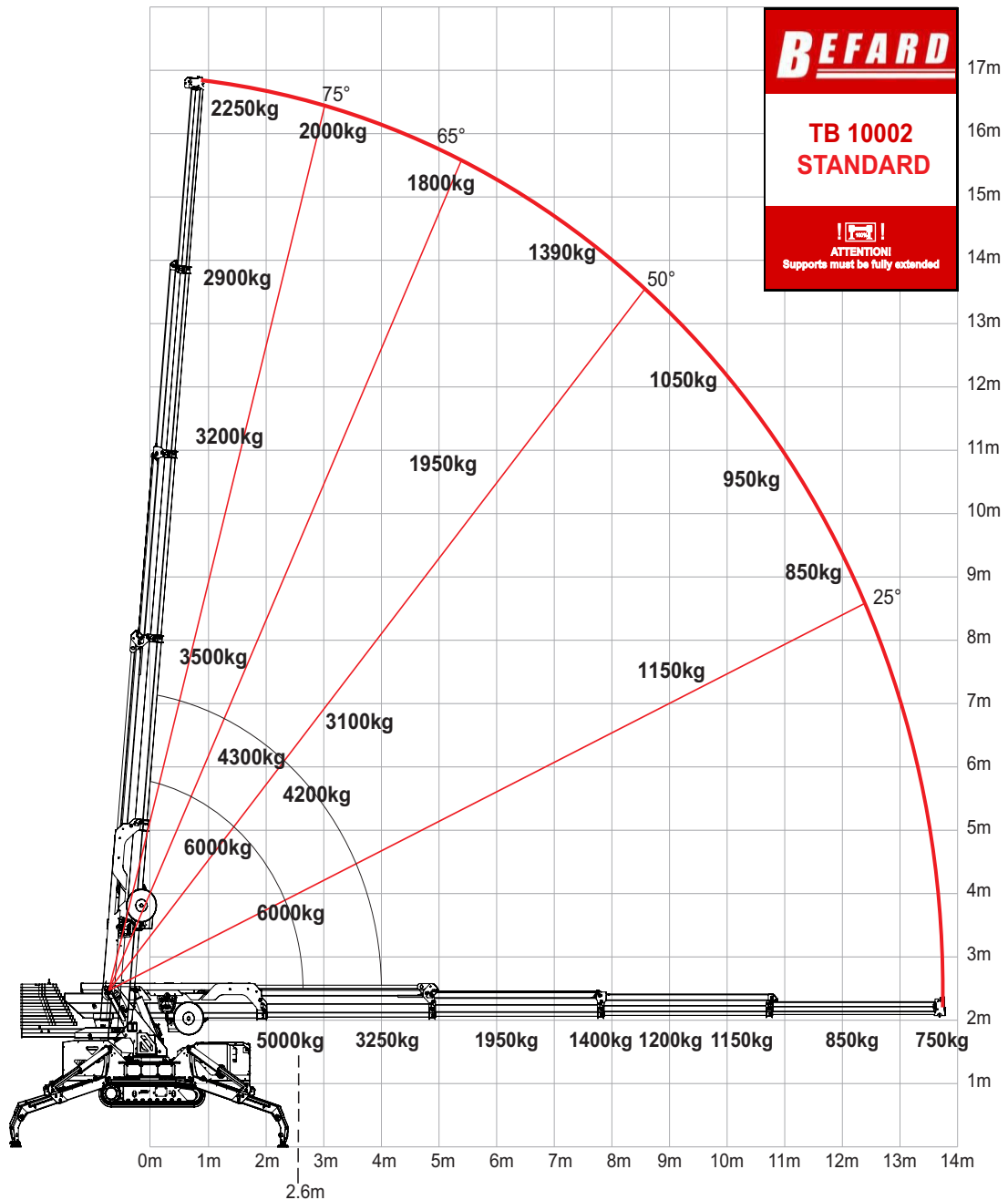
25/06/2025

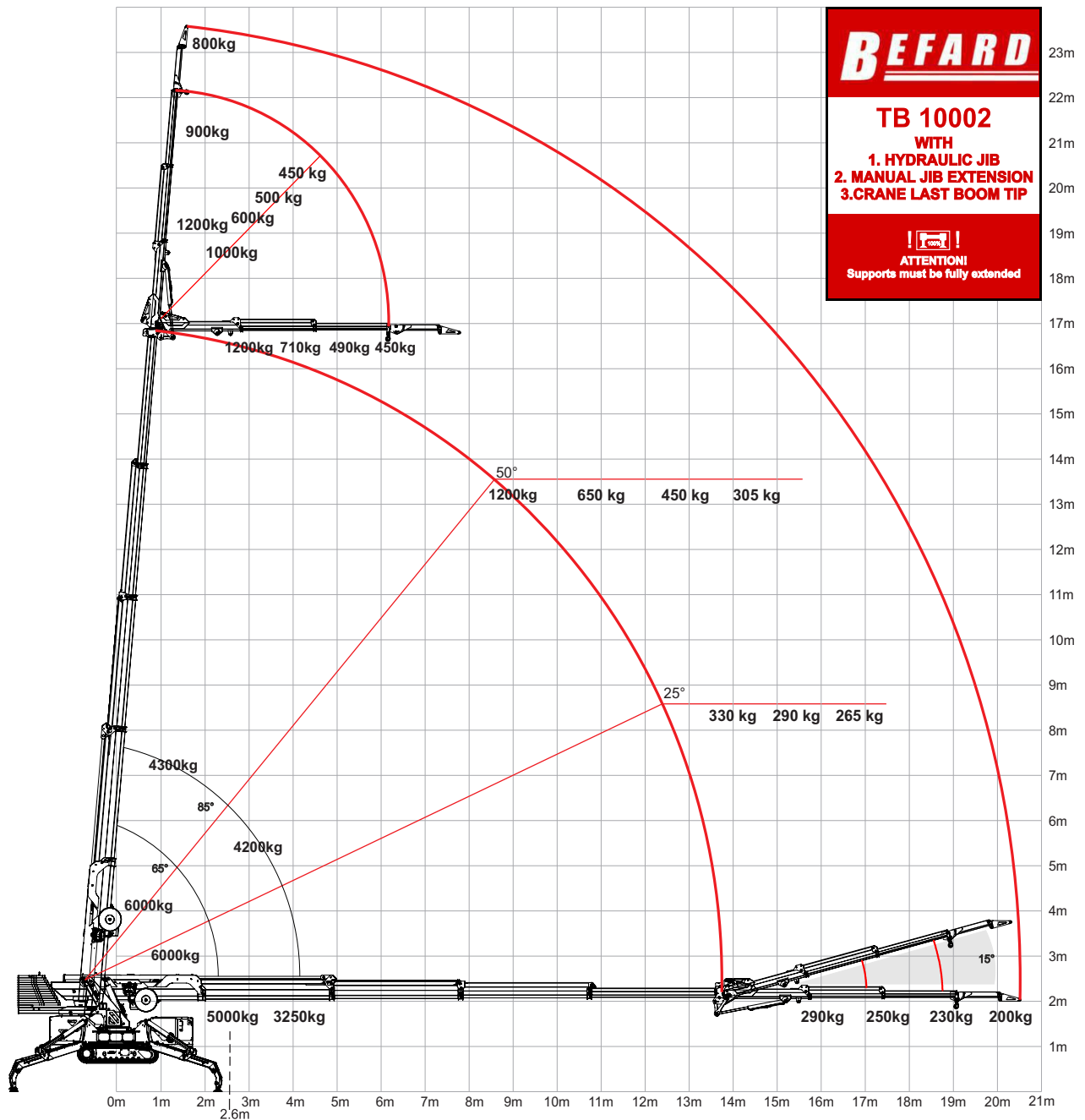
TB10002**BEFARD.COM**

ABILITY TO LOWER THE MAIN BOOM BELOW HORIZONTAL LEVEL**MULTIPLE WORKING POSITIONS OF THE ACTIVE JIB ARM**

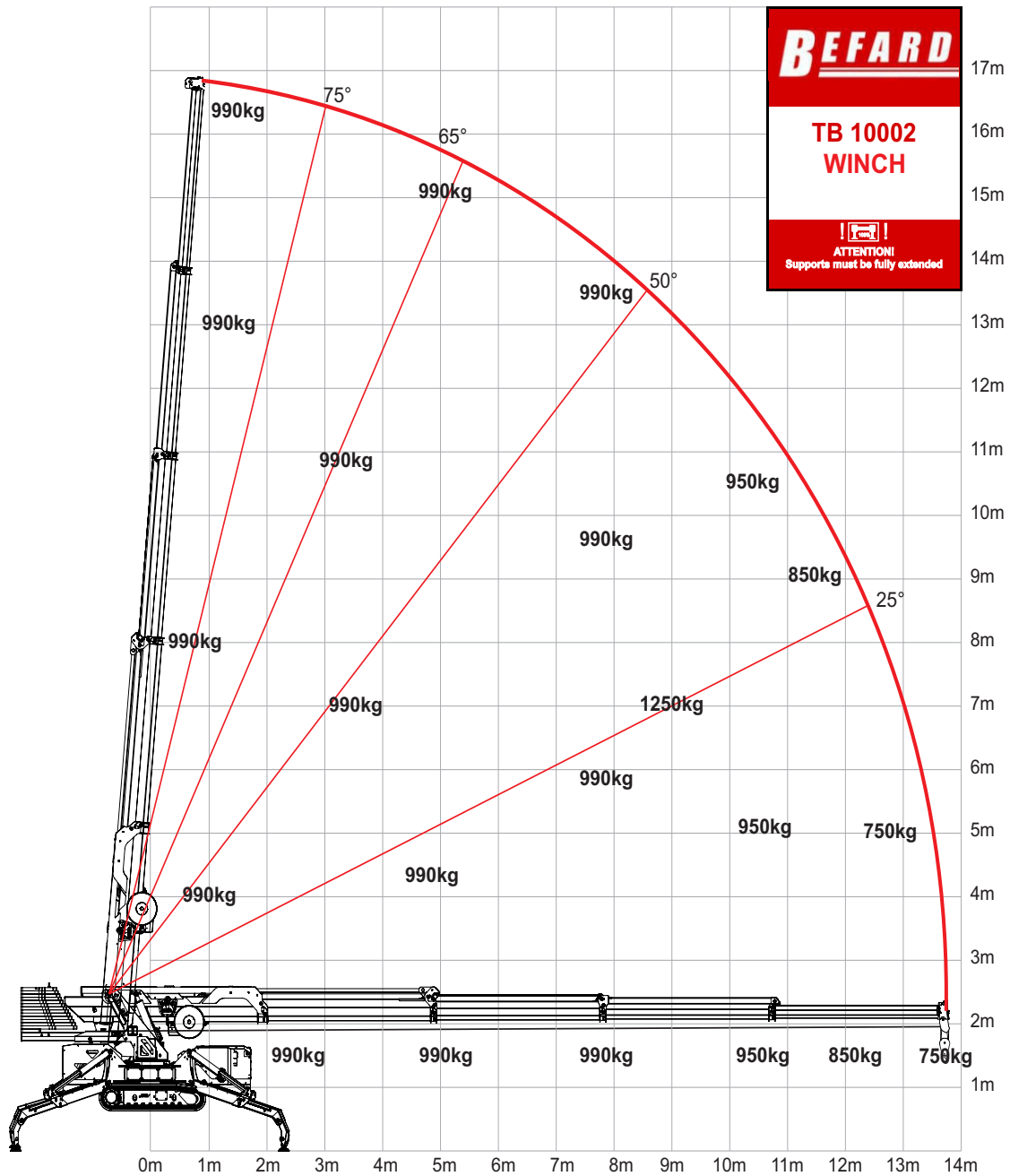
25/06/2025

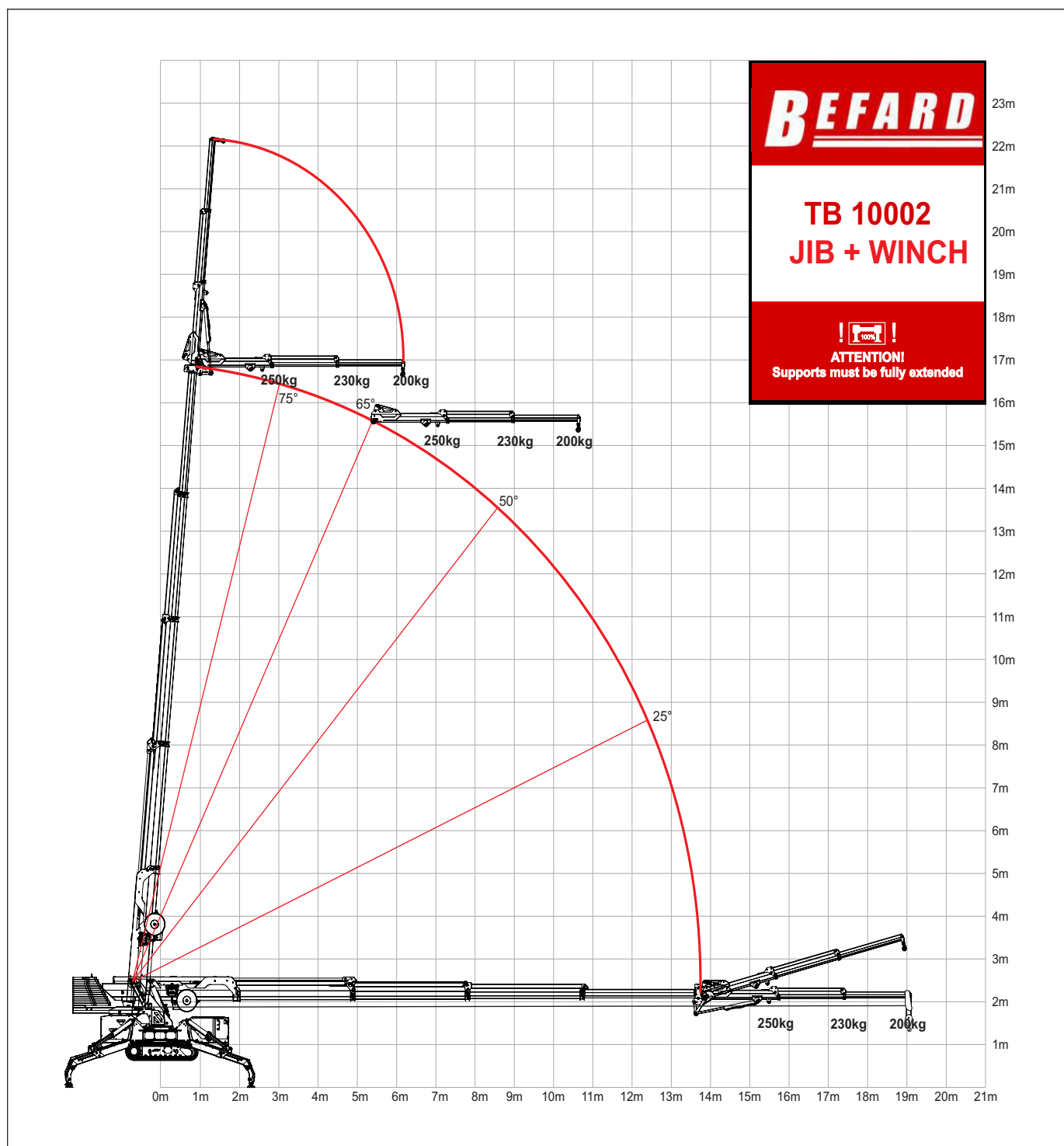
TB10002**BEFARD.COM**

TB10002 STANDARD


TB10002 JIB + LAST BOOM TIP


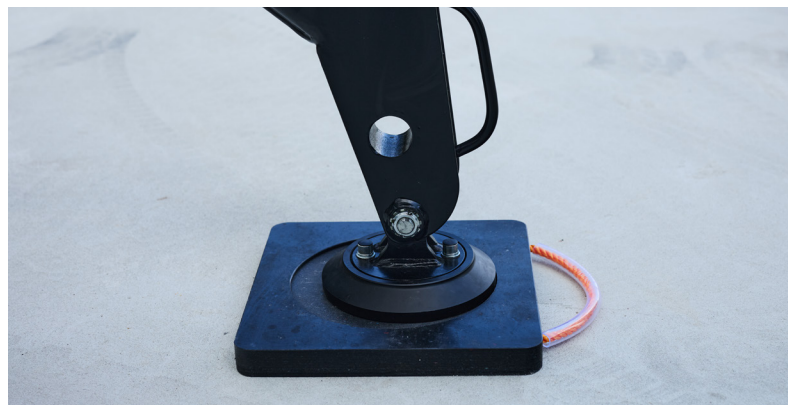
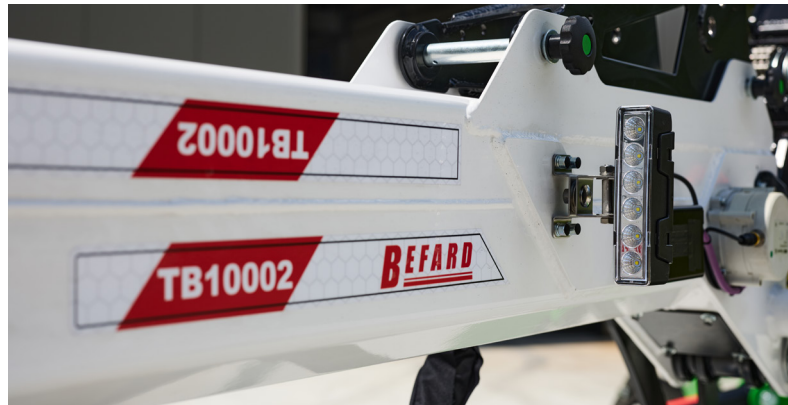
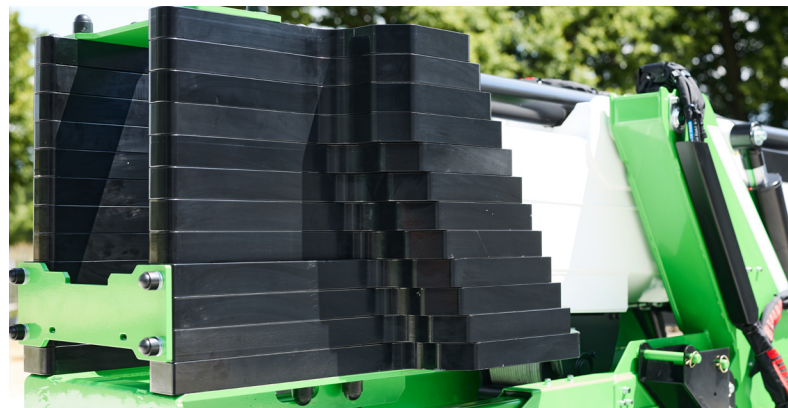
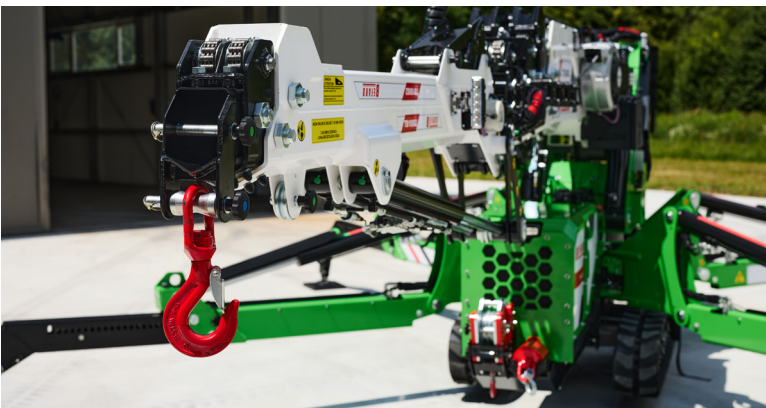
TB10002 WINCH



TB10002 JIB + WINCH


BEFARD TB10002

BEFARD



TB10002

BEFARD.COM

BEFARD