

BEFARD



MINI CRAWLER CRANE

XM1200

01/07/2025

PICK & CARRY

UNMATCHED POWER, COMPACT SIZE FOR MAXIMUM EFFICIENCY

- maximum lifting capacity 1500 kg - WITH SUPPORT FEET
- Pick & Carry mode: travel with suspended load up to 1200 kg
- reach: over 10 m (with optional equipment)
- Hydraulic winch: 990 kg (optional version: 500 kg)
- Column rotation: 50°
- width 780 mm, height below 1750 mm (possibility of passing through any door)
- Height: under 1.75 m (fits through standard doorways)
- extendable crawler chassis 780 mm-1250 mm improving stability while maintaining compactness
- Remote radio control (optional version with display)
- anti-overload system
- wide range of applications on construction sites
- 3in1 drive: combustion engine (PB), electric motor (230 V, 400 V or 110 V) and Li-Ion batteries



01/07/2025

XM1200

BEFARD.COM

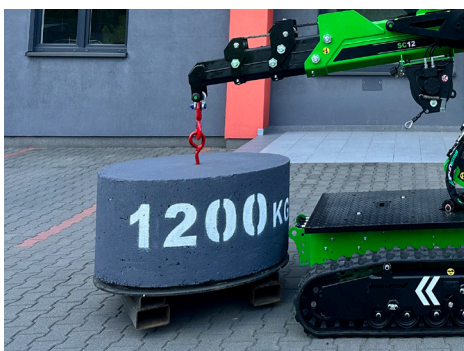
UNMATCHED ADVANTAGES

BEFARD



MACHINE REACH

The X1200 offers a maximum vertical reach of 7.7 meters in its standard configuration, and up to 10.2 meters with optional equipment — allowing work from the ground floor up to the second floor.



LIFTING CAPACITY

The standard machine offers a lifting capacity of 1200 kg, while optional equipment increases it to 1500 kg — values that are more than sufficient for most common applications such as window installation, loading operations, warehouse tasks, and short-distance transport.



PICK & CARRY

The Pick&Carry function allows you to move with a lifted load. It allows you to quickly and efficiently transport elements without having to put them down, which significantly improves work on a construction site or in an industrial plant.



3-IN-1 POWER SUPPLY or FULLY ELECTRIC

The crane can be equipped with three independent power sources — combustion engine, electric motor (230 V / 400 V / 110 V), and Li-ion batteries — providing full operational flexibility in any conditions. In a properly configured machine, the operator can easily select one of the three available power sources depending on the location and nature of the work.

01/07/2025

XM1200

BEFARD.COM

WHAT MATTERS MOST INCLUDED AS STANDARD

BEFARD



FULLY REMOTE-CONTROLLED MACHINE

Radio control of both travel and crane operation makes work easier and ensures greater safety. A charger for the radio control is included as standard.

Optional available remote radio control with LCD screen.



HYDRAULIC EXTENSIONS

3-section integrated hydraulic extension – provides smooth extension and even load distribution across each section, which enhances stability, structural durability, and operational safety.



EXTENDABLE NON-MARKING CRAWLER TRACKS

The extendable chassis (0,78 m - 1,25 m) enhances the machine's stability. The ability to narrow the track width allows passage through standard doorways. Non-marking tracks available.



ROLLERS WITH SUSPENSION

The chassis is equipped with 10 travel rollers featuring shock absorption that adapts to the ground surface. This ensures the crane maintains high stability and smooth movement even when traveling with a load, minimizing the risk of shocks and tilting.

01/07/2025

XM1200

BEFARD.COM

WHAT MATTERS MOST INCLUDED AS STANDARD

BEFARD



ELBOW JOINT

The elbow joint — installed between the column and the boom — enables:

- constant lifting torque of the boom
- consistent lifting and lowering speed of the boom.



GROUND CLEARANCE

With a ground clearance of 0,13 m, the machine offers better protection for components, easier obstacle crossing, improved comfort in rough terrain, and greater versatility.



HIGH-MOUNTED DRIVE

High-mounted crawler drive (reduction gear), which reduces the risk of damage.



WIDE BOOM OPENING ANGLE

The 65° boom opening angle enables smooth and efficient operation when working around two-story structures — from ground floor level up to the second floor — thanks to the machine's maximum reach of 10.2 meters.

01/07/2025

XM1200

BEFARD.COM

CHOOSE OPTIONALLY

BEFARD



OPTIONAL WINCHES AVAILABLE

Optional hydraulic winch:

- 990 kg with 50 m of 7 mm steel rope
- 500 kg with 36 m of 6 mm steel rope
- significantly increasing the machine's functionality.

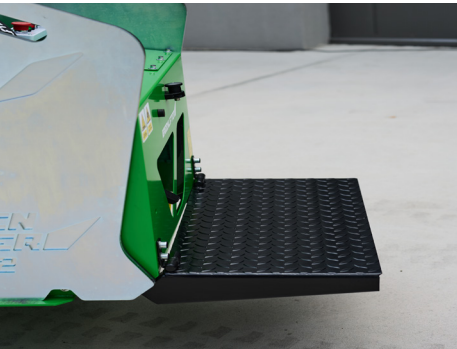


POSSIBLE INSTALLATION OF A SUPPORT BLADE

Additional support blade at the front of the machine. Manually extendable, hydraulically lowerable. Increases stationary lifting capacity to 1500 kg.

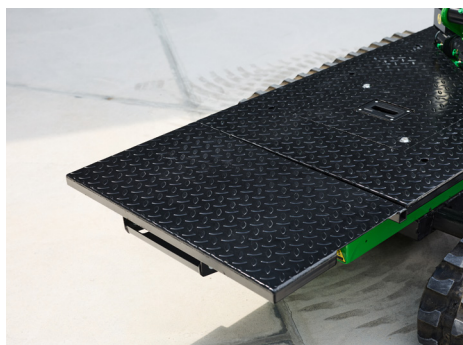
The blade can be equipped with additional options:

- forks
- tow hook



OPERATOR STANDING PLATFORM - REAR

Rear standing platform for the operator (not required during standard operation).



LOADING PLATFORM EXTENSION - FRONT

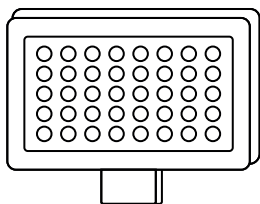
Removable extension for the loading platform, extending it by approximately 0.3 meters.

01/07/2025

XM1200

BEFARD.COM

ACCESSORIES INCLUDED IN THE STANDARD PACKAGE



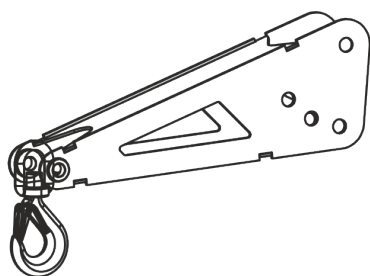
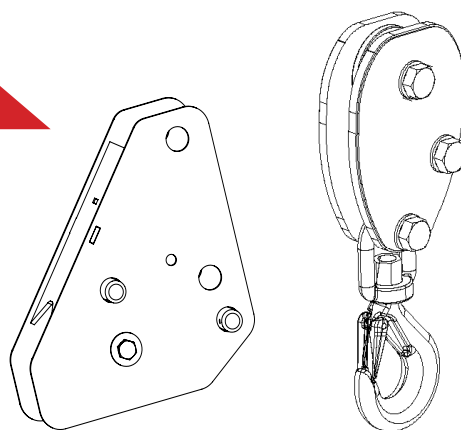
LED WORK LIGHTS

- 2 pcs:
- fixed lamp
 - portable magnetic lamp

AVAILABLE AS AN OPTION

BLOCK

Accessory for the winch.

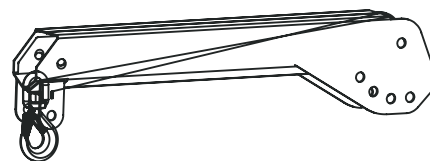


BOOM TIP/SEARCHING HOOK

Possibility to extend the reach by approx. 50 cm.

MANUAL EXTENSION/JIB ARM

Possibility to extend the reach by approx. 100 cm.
Capability to use 2 pcs. of manual JIB arm simultaneously.



01/07/2025

TECHNICAL SPECIFICATIONS

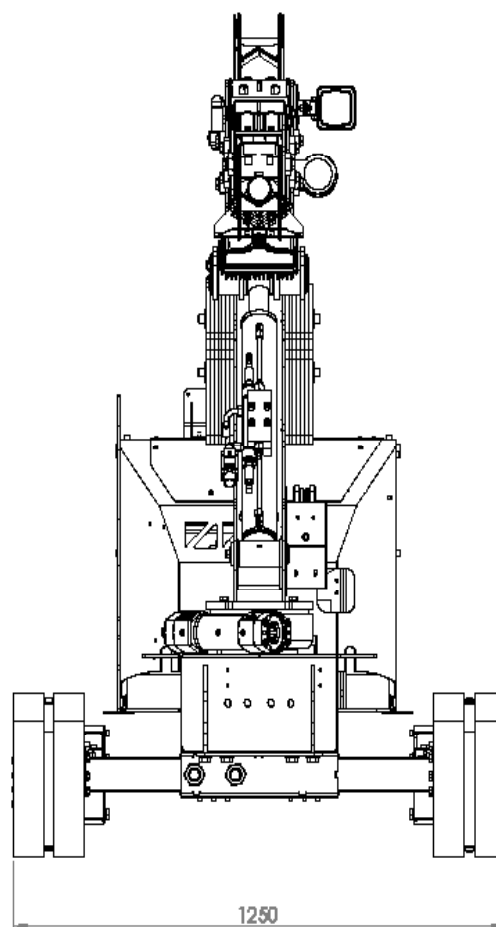
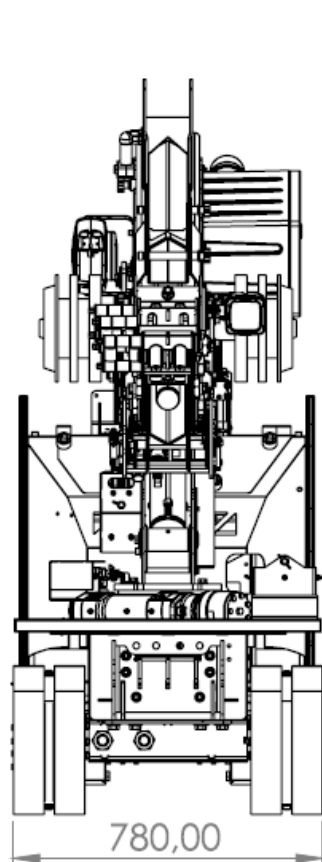
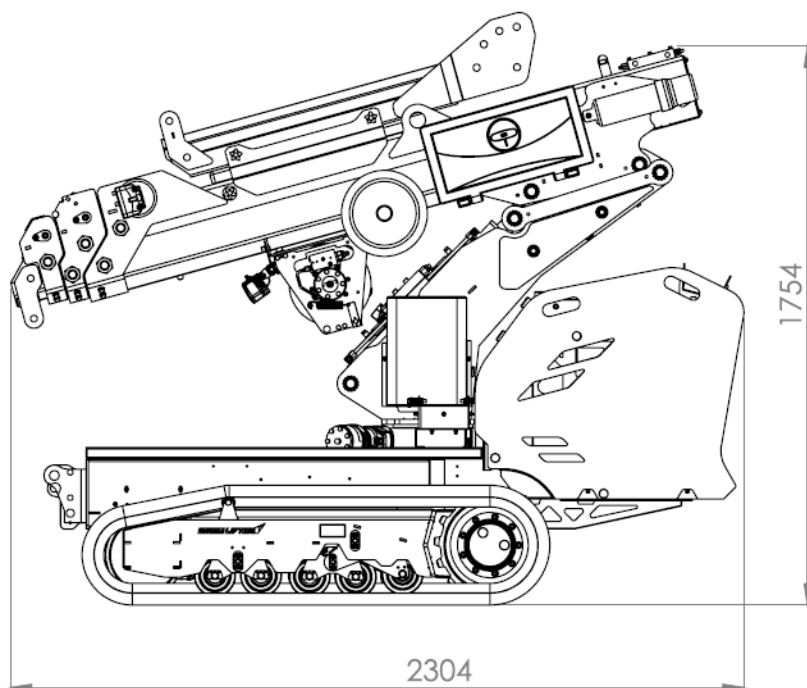


Maximum pick and carry load capacity	1200 kg
Maximum load capacity with support legs (optional)	1500 kg
Transport length of the device	2,3 m
Transport height of the device	1,75 m
Transport width of the device	0,78 m
Maximum vertical reach with optional equipment	↕ 10,2 m
Maximum vertical reach (for basic version)	↕ 7,7 m
Maximum horizontal reach with optional equipment	↔ 8,65 m
Maximum horizontal reach (for basic version)	↔ 6,15 m
Hydraulic winch load capacity	990 kg or 500 kg
Winch cable length (depending on version)	50m / 36 m
Radio control	Working and driving
Basic machine weight	1140 kg
Machine weight with counterweights	1294 kg
Power supply	Fully electric or 3-in-1 power supply: Li-ion batteries, electric (230V, 400V, or 110V) and gasoline engine
Column rotation	Rotation 25° to the right and 25° to the left (total 50°)

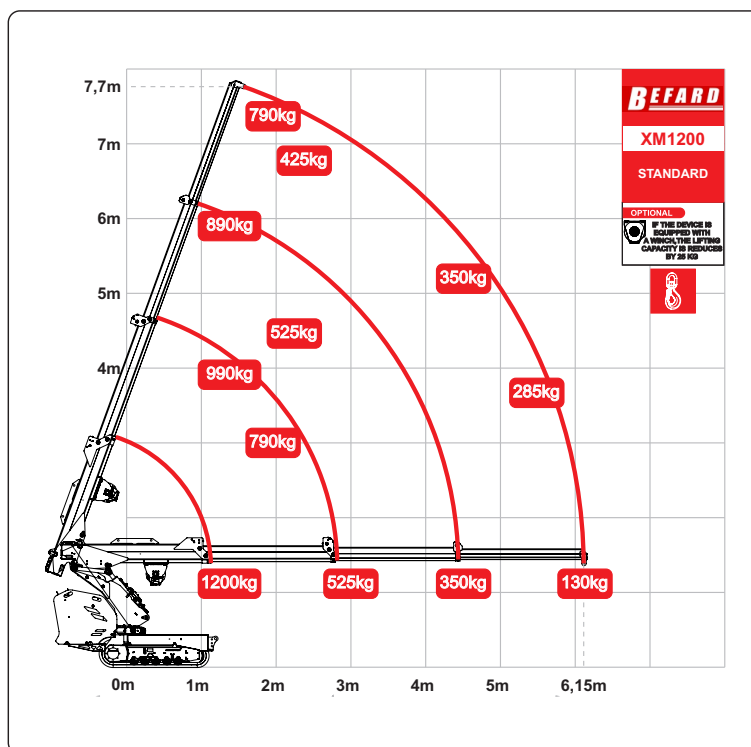
01/07/2025

XM1200

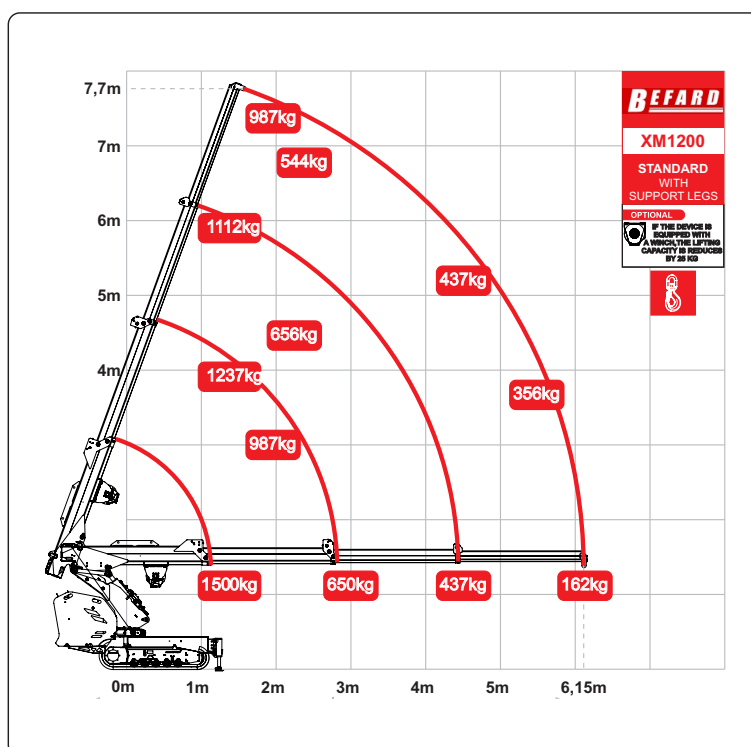
BEFARD.COM



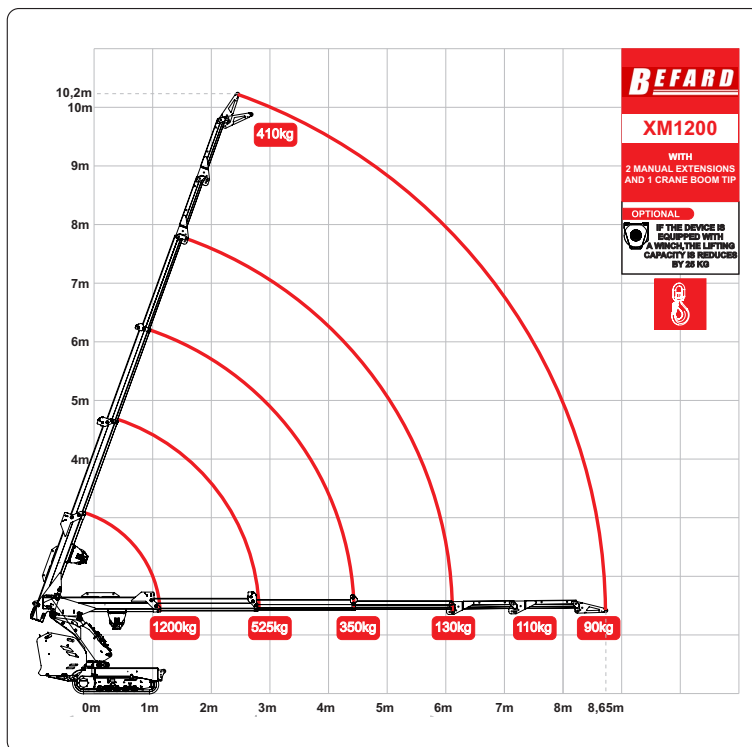
01/07/2025



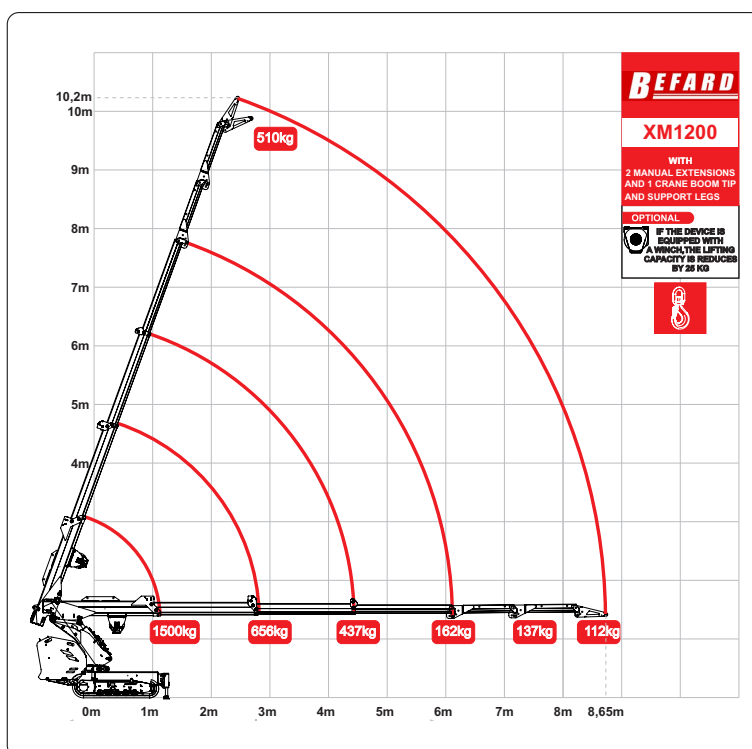
XM1200 STANDARD + SUPPORT FEET



01/07/2025



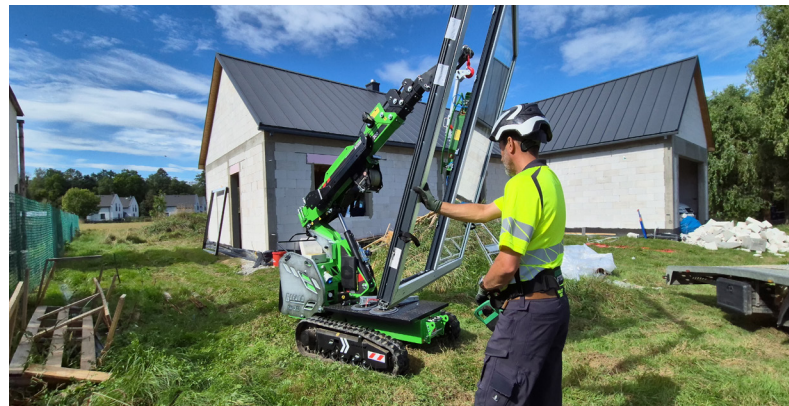
XM1200 ACCESSORIES + SUPPORT FEET



01/07/2025

BEFARD XM1200

BEFARD



01/07/2025

XM1200

BEFARD.COM

BEFARD

01/07/2025

t

BEFARD.COM